

WebsitePanel

Welcome wwwccny [My Account](#) | [Sign Out](#)

Users Spaces

Username

Account Home Reporting

[wwwccny](#) > [siteadmin](#) > [Account Home](#)

siteadmin

Account Menu

Spaces

Peers

Running Tasks

Audit Log

Hosting Spaces

Create Hosting Space

[Basic Plan](#)



Domains



Web



FTP Accounts



File Manager



Databases



User Account Notes

No comments added

Add Notes

Data Bases

Your account 'Basic Plan' has been upgraded to allow you to create MySQL databases. This will allow you to install certain programs if you chose to do so as the site administrator.

Status

Active



Powered by [WebsitePanel](#). Copyright © 2011 Outercurve Foundation.

Version 1.2.0



Go to the 'Web Panel Support' page
for additional information and help:
<http://wpsupport.ccnycuny.edu/>

http://webpanel.ccny.cuny.edu/Default.aspx?pid=SpaceFileMa WebsitePanel - wpsadmin -... phpinfo()

File Edit View Favorites Tools Help

Convert Select

The City College of New Y... Digital Exhibits » Page ... Comments for Archival... Suggested Sites Get more Add-ons

Welcome **wwwccny** My Account Sign Out

WebsitePanel

Users Spaces

Username

Account Home Reporting

wwwccny wpsadmin Basic Plan 750DB File Manager

Basic Plan 750DB

Hosting Space Menu

- Domains
- Web Sites
- IP Addresses
- FTP Accounts
- Databases
- File Manager
- phpMyAdmin

File Manager

Upload Create File Create Folder Create Access DB Zip Unzip Copy

Home wpsupport.ccny.cuny.edu wwwroot

File Name	Size	
index.html	2K	2/10/2012 1:08:25 PM
default.aspx	671	1/20/2012 12:37:31 PM
web.config	559	2/2/2012 3:57:25 PM

Disk Space, MB: 0 of 750 Calculate Disk Space

Powered by WebsitePanel. Copyright © 2011 Outercurve Foundation. Version 1.2.0

First Step: Part I

You will see the 'phpMyAdmin' added on the bottom of your menu.

Go to the 'wwwroot' of your website and create this file: 'phpinfo.php'

WebsitePanel

Account Home Reporting

Basic Plan

Hosting Space Menu

- Domains
- Web Sites
- IP Addresses
- FTP Accounts
- Databases
- File Manager
- phpMyAdmin

File Manager

Upload Create File Create Folder Create Access DB Zip Unzip Copy

Home siteadmin.cuny.cuny.edu wwwroot

File Name Size

account_client	671	12/21/2011 10:22:34 AM
	17	12/21/2011 11:04:37 AM
	516	12/21/2011 10:22:34 AM

Create File

File Name: phpinfo.php

File Content (optional):

```
<?php  
phpinfo();  
?>
```

Create Cancel

Disk Space, MB: 0 of 500 Calculate Disk Space

Powered by WebsitePanel. Copyright © 2011 Outercurve Foundation. Version 1.2.0

First Step: Part 2

Insert this code:

```
<?php  
phpinfo ( );  
?>
```

into the file: 'phpinfo.php'

http://webpanel.ccny.cuny.edu/Default.aspx?pid=SpaceFileM... WebsitePanel - wpsadmin -... phpinfo()

File Edit View Favorites Tools Help

Convert Select

The City College of New Y... Digital Exhibits » Page ... Comments for Archival... Suggested Sites Get more Add-ons

Welcome **wwwccny** [My Account](#) | [Sign Out](#)

WebsitePanel

Users Spaces

Username

Account Home Reporting

[wwwccny](#) > [wpsadmin](#) > [Basic Plan 750DB](#) > [File Manager](#)

Basic Plan 750DB

Hosting Space Menu

- Domains
- Web Sites
- IP Addresses
- FTP Accounts
- Databases
- File Manager
- phpMyAdmin

File Manager

Upload Create File Create Folder Create Access DB Zip Unzip Copy Move Delete

Home > [wpsupport.ccny.cuny.edu](#) > [wwwroot](#)

File Name	Size	Modified
default.aspx	671	
index.html	2K	
phpinfo.php	25	
web.config	738	2/10/2012 12:04:16 PM

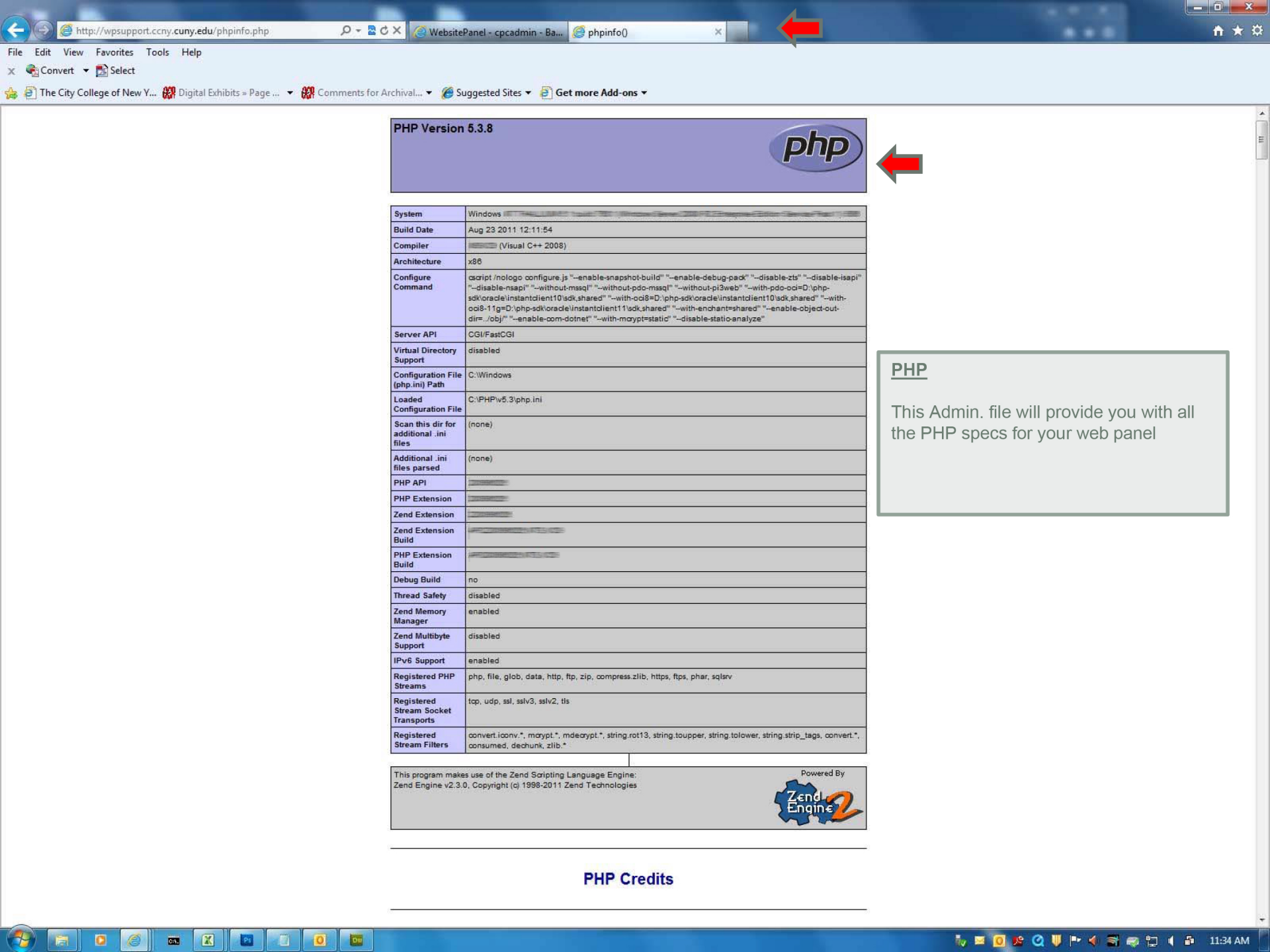
Disk Space, MB: 0 of 750 [Calculate Diskspace](#)

Powered by [WebsitePanel](#). Copyright © 2011 Outercurve Foundation. Version 1.2.0

11:05 AM

First Step: Part 3

Open file: 'phpinfo.php'



PHP Version 5.3.8



System	Windows
Build Date	Aug 23 2011 12:11:54
Compiler	(Visual C++ 2008)
Architecture	x86
Configure Command	cdscript /nologo configure.js "--enable-snapshot-build" "--enable-debug-pack" "--disable-zts" "--disable-isapi" "--disable-nsapi" "--without-mysql" "--without-pdo-mysql" "--without-pi3web" "--with-pdo-oci=D:\php-sdk\oracle\instantclient10\sdk_shared" "--with-oci8=D:\php-sdk\oracle\instantclient10\sdk_shared" "--with-oci8-11g=D:\php-sdk\oracle\instantclient11\sdk_shared" "--with-ehant=shared" "--enable-object-out-dir=.\obj" "--enable-com-dotnet" "--with-mcrypt=static" "--disable-static-analyze"
Server API	CGI/FastCGI
Virtual Directory Support	disabled
Configuration File (php.ini) Path	C:\Windows
Loaded Configuration File	C:\PHP\5.3\php.ini
Scan this dir for additional .ini files	(none)
Additional .ini files parsed	(none)
PHP API	
PHP Extension	
Zend Extension	
Zend Extension Build	
PHP Extension Build	
Debug Build	no
Thread Safety	disabled
Zend Memory Manager	enabled
Zend Multibyte Support	disabled
IPv6 Support	enabled
Registered PHP Streams	php, file, glob, data, http, ftp, zip, compress.zlib, https, ftps, phar, sqlsrv
Registered Stream Socket Transports	tcp, udp, ssl, sslv3, sslv2, tls
Registered Stream Filters	convert.iconv.*, mcrypt.*, mdecrypt.*, string.rot13, string.toupper, string.tolower, string.strip_tags, convert.*, consumed, dechunk, zlib.*

This program makes use of the Zend Scripting Language Engine:
Zend Engine v2.3.0, Copyright (c) 1998-2011 Zend Technologies



PHP

This Admin. file will provide you with all the PHP specs for your web panel

PHP Credits

WebsitePanel

Welcome [wwwccny](#) [My Account](#) | [Sign Out](#)

Users Spaces

Username

Account Home Reporting

[wwwccny](#) > [wpsadmin](#) > [Basic Plan 750DB](#) > [MySQL 5.x](#)

Basic Plan 750DB

Hosting Space Menu

- Domains
- Web Sites
- IP Addresses
- FTP Accounts
- Databases
- File Manager
- phpMyAdmin

MySQL 5 Databases

Create Database

Item Name

Name

[wpd](#)

1

Databases: 1 of 5

MySQL 5 Users

Create User

Item Name

Name

[beths](#)

1

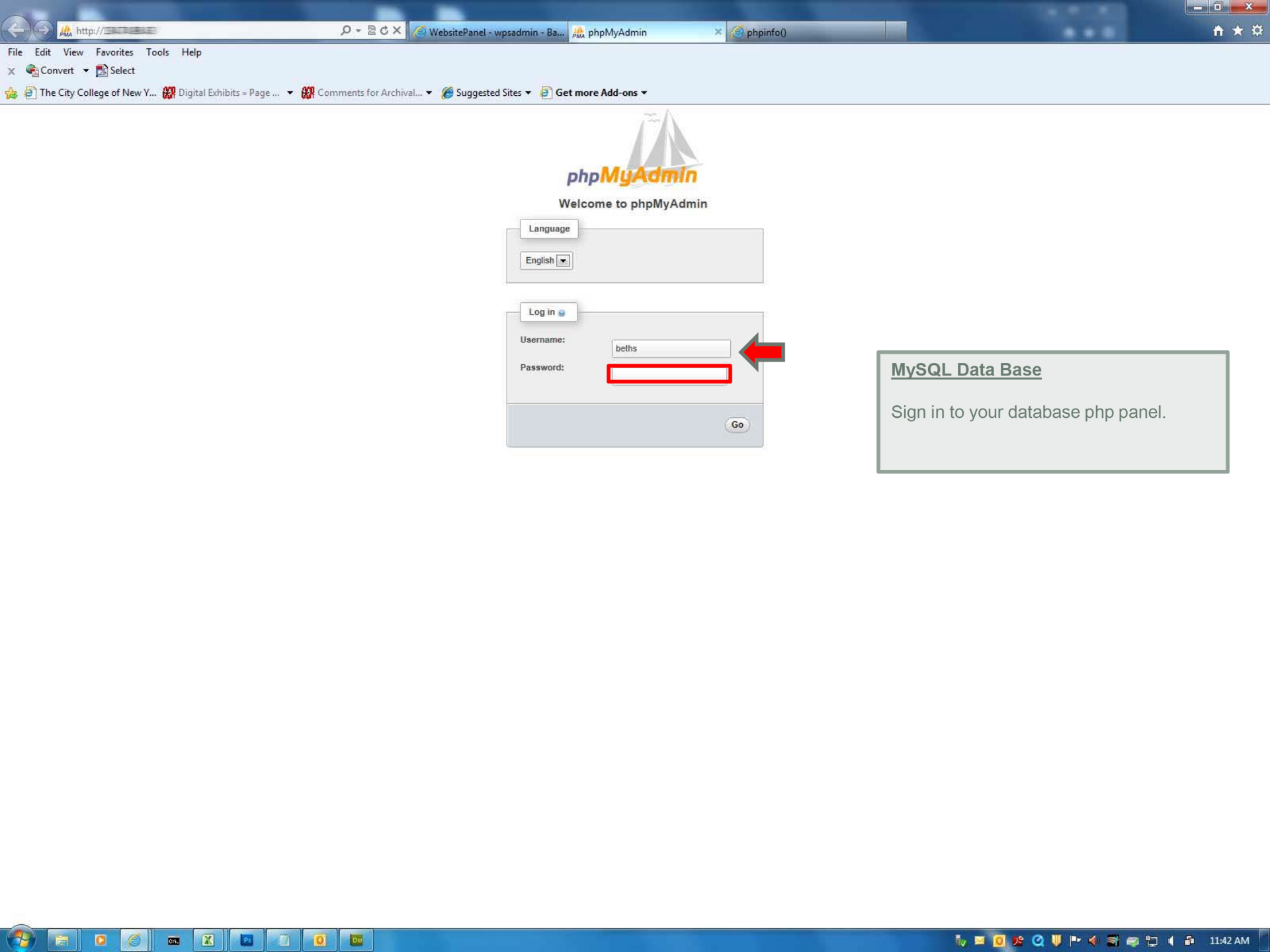
Users: 1 of 10

Powered by WebsitePanel. Copyright © 2011 Outercurve Foundation.

Version 1.2.0

MySQL Data Base

Create your database and users. Go to your 'phpMyAdmin' link.



Welcome to phpMyAdmin

Language

English ▼

Log in

Username:

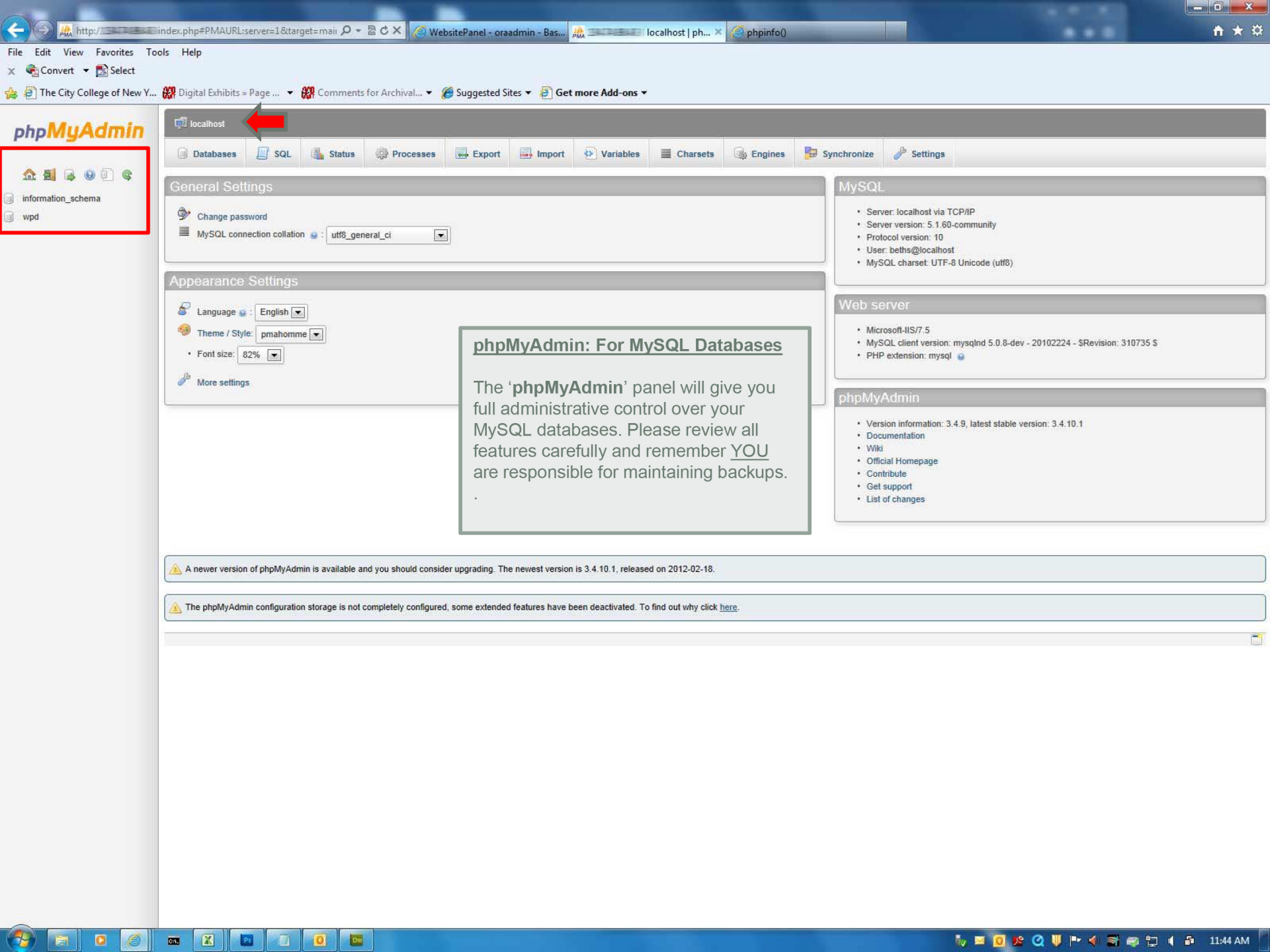
belhs

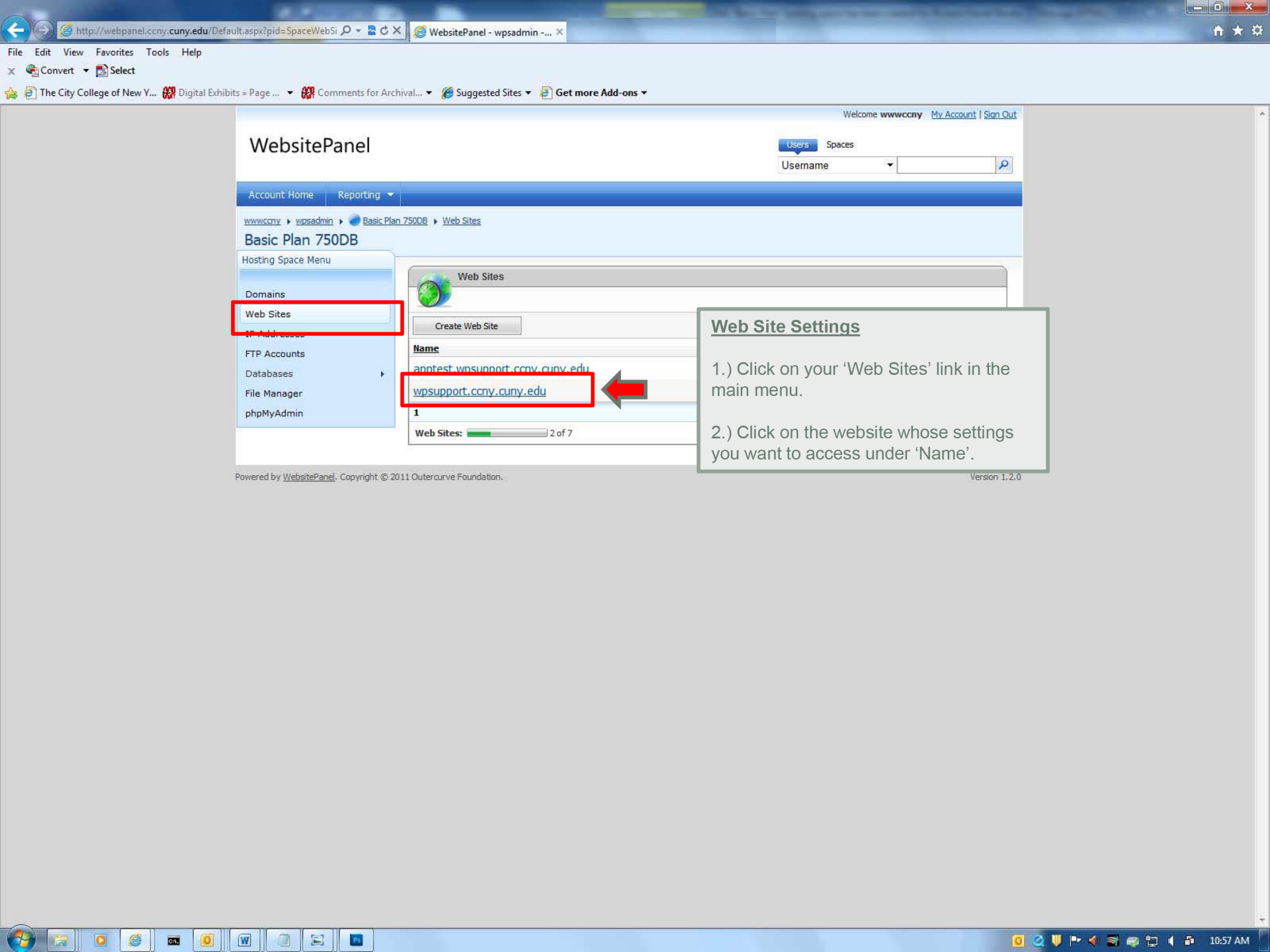
Password:

Go

MySQL Data Base

Sign in to your database php panel.





WebsitePanel

Welcome **wwwccny** [My Account](#) | [Sign Out](#)

[Users](#) [Spaces](#)

Username

[Account Home](#)

[Reporting](#)

[wwwccny](#) > [wpsadmin](#) > [Basic Plan 750DB](#) > [Web Sites](#)

Basic Plan 750DB

Hosting Space Menu

[Domains](#)

[Web Sites](#)

[FTP Accounts](#)

[Databases](#)

[File Manager](#)

[phpMyAdmin](#)

Web Sites

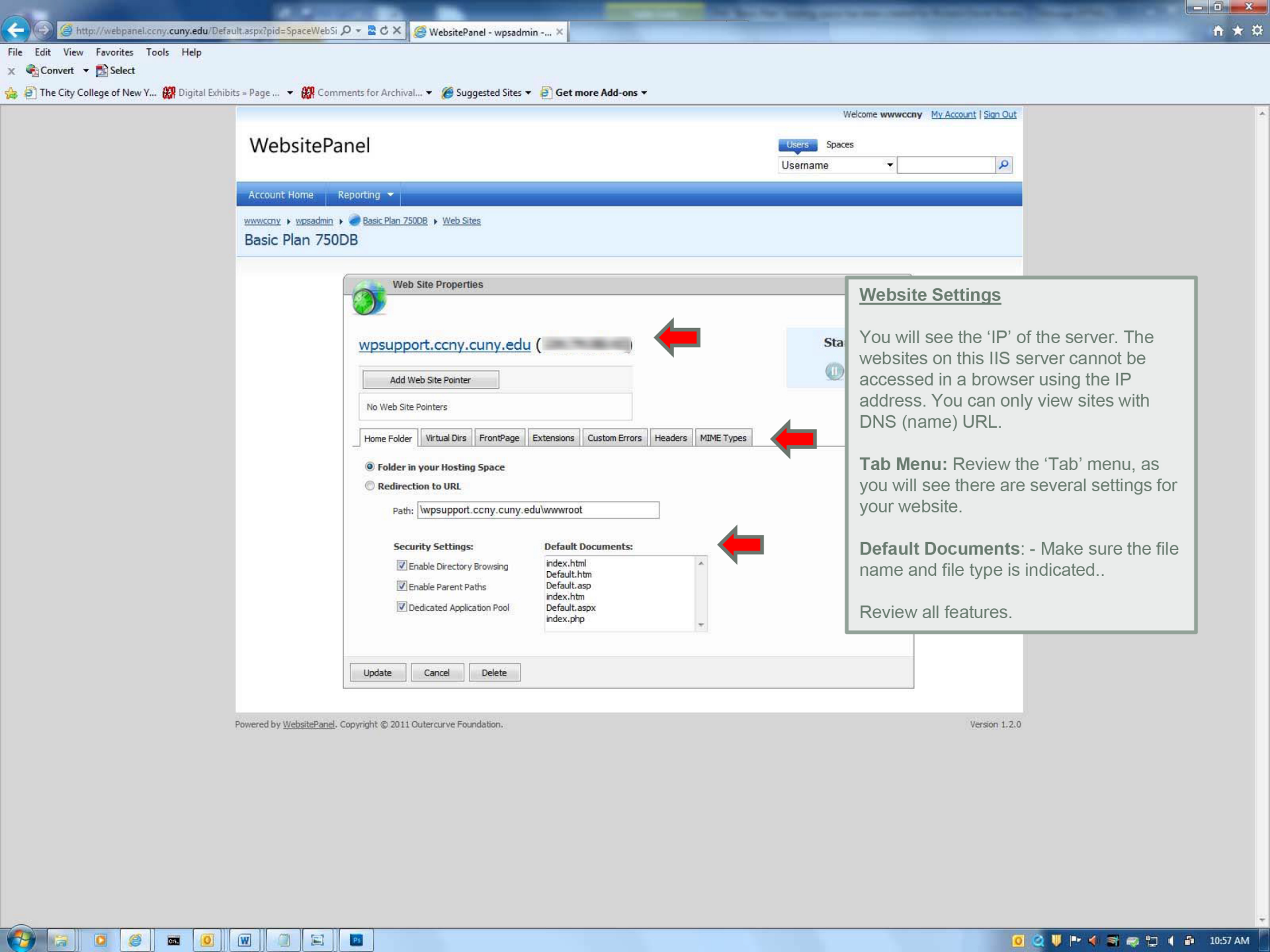
[Create Web Site](#)

Name
apptest.wpsupport.ccny.cuny.edu
wpsupport.ccny.cuny.edu

1
Web Sites: 2 of 7

Web Site Settings

- 1.) Click on your 'Web Sites' link in the main menu.
- 2.) Click on the website whose settings you want to access under 'Name'.



WebsitePanel

Welcome [wwwccny](#) [My Account](#) | [Sign Out](#)

Users

Spaces

Username

Account Home

Reporting

[wwwccny](#) > [wpsadmin](#) > [Basic Plan 750DB](#) > [Web Sites](#)

Basic Plan 750DB

Web Site Properties

[wpsupport.ccny.cuny.edu](#) ()

Add Web Site Pointer

No Web Site Pointers

Home FolderVirtual DirsFrontPageExtensionsCustom ErrorsHeadersMIME Types

☒ Folder in your Hosting Space
☐ Redirection to URL

Path:

Security Settings:

- ☒ Enable Directory Browsing
- ☒ Enable Parent Paths
- ☒ Dedicated Application Pool

Default Documents:

- index.html
- Default.htm
- Default.asp
- index.htm
- Default.aspx
- index.php

UpdateCancelDelete

Website Settings

You will see the 'IP' of the server. The websites on this IIS server cannot be accessed in a browser using the IP address. You can only view sites with DNS (name) URL.

Tab Menu: Review the 'Tab' menu, as you will see there are several settings for your website.

Default Documents: - Make sure the file name and file type is indicated..

Review all features.

http://webpanel.ccny.cuny.edu/Default.aspx?pid=SpaceFileMa WebsitePanel - wpsadmin - ...

File Edit View Favorites Tools Help

Convert Select

The City College of New Y... Digital Exhibits » Page ... Comments for Archival... Suggested Sites Get more Add-ons

Welcome wwwccny My Account Sign Out

WebPanel

Username

Account Home Reporting

wwwccny wpsadmin Basic Plan 750DB File Manager

Basic Plan 750DB

Hosting Space Menu

- Domains
- Web Sites
- IP Addresses
- FTP Accounts
- Databases
- File Manager
- phpMyAdmin

File Manager

Upload Create File Create Folder Create Access DB Zip Unzip Copy Move Delete

Home

File Name
apptest.wpsupport.ccny.cuny.edu
wpsupport.ccny.cuny.edu

Edit Permissions

Disk Space, MB: 0 of 750 Calculate DiskSpace

Powered by WebsitePanel. Copyright © 2011 Outercurve Foundation. Version 1.2.0

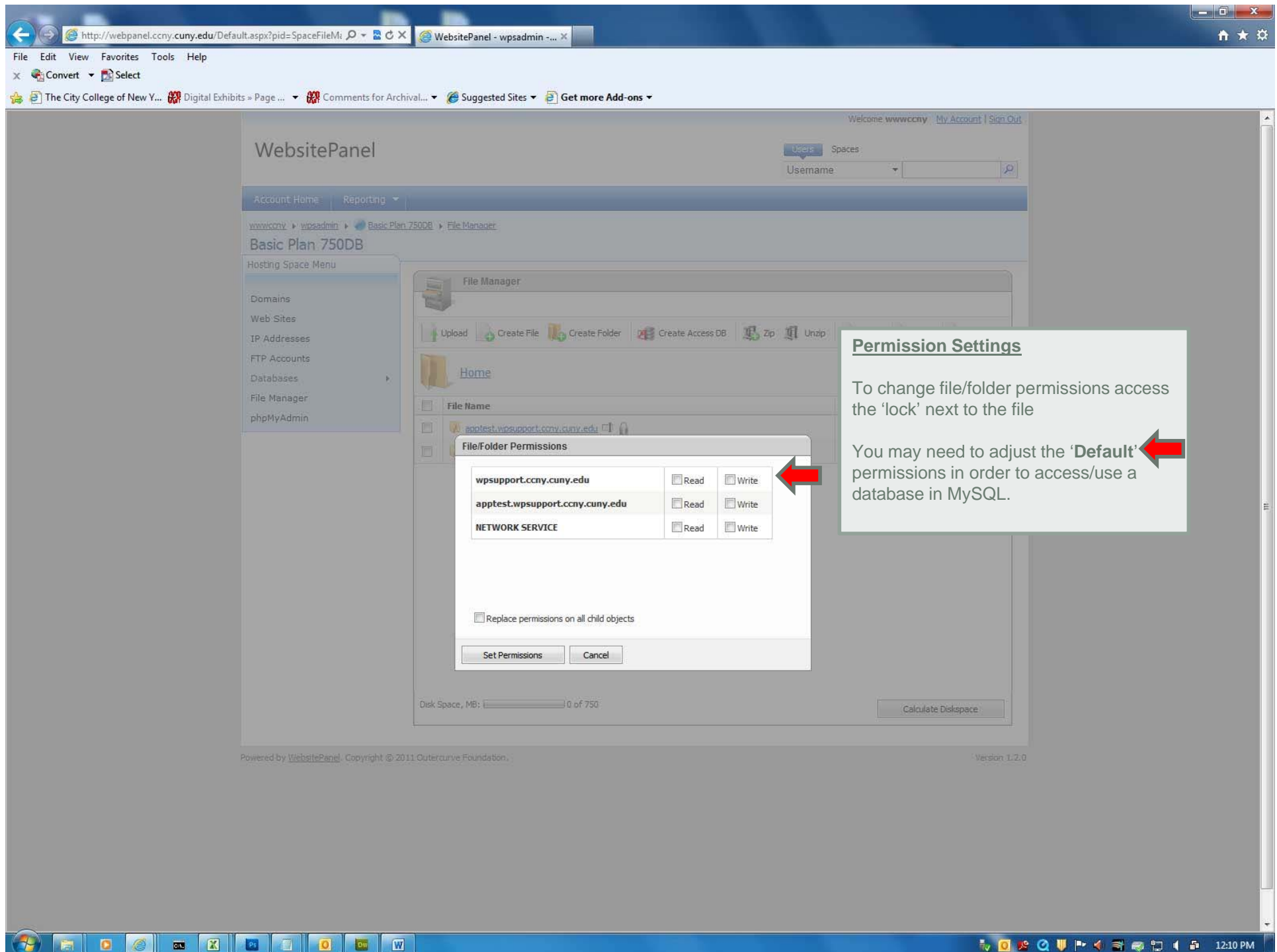
http://webpanel.ccny.cuny.edu/Default.aspx?pid=SpaceFileManager&SpaceID=72

12:09 PM

Permission Settings

To change file/folder permissions access the 'lock' next to the file

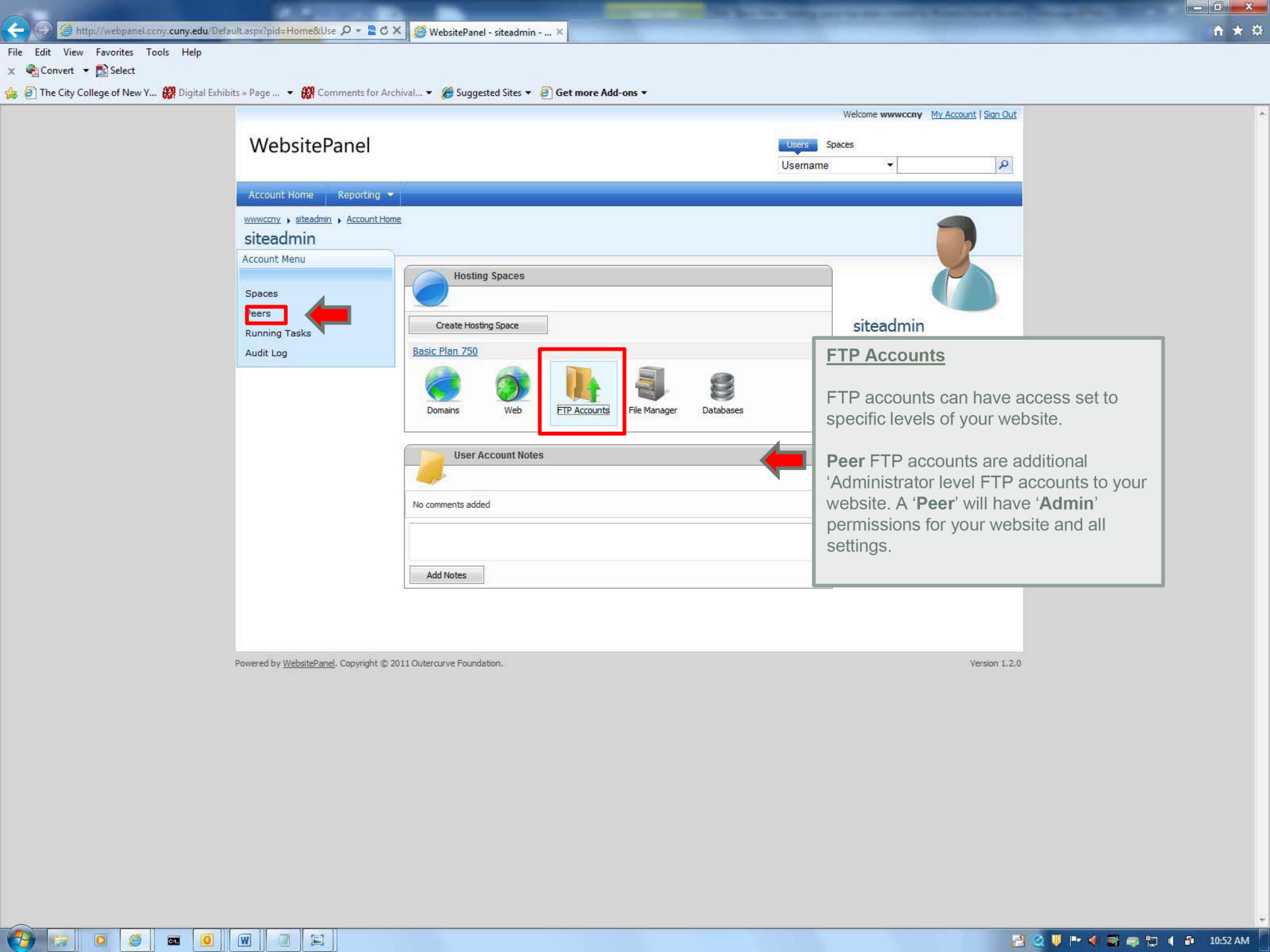
You may need to adjust the 'Default' permissions in order to access/use a database in MySQL.



Permission Settings

To change file/folder permissions access the 'lock' next to the file

You may need to adjust the 'Default' permissions in order to access/use a database in MySQL.



WebsitePanel

Welcome **wwwccny** [My Account](#) | [Sign Out](#)

Users

Spaces

Username



Account Home

Reporting

[wwwccny](#) > [siteadmin](#) > [Account Home](#)

siteadmin

Account Menu

Spaces

Peers

Running Tasks

Audit Log

Hosting Spaces

Create Hosting Space

[Basic Plan 750](#)



Domains



Web



FTP Accounts



File Manager



Databases



User Account Notes

No comments added

Add Notes

siteadmin

FTP Accounts

FTP accounts can have access set to specific levels of your website.

Peer FTP accounts are additional 'Administrator level' FTP accounts to your website. A '**Peer**' will have '**Admin**' permissions for your website and all settings.

WebsitePanel

Welcome [wwwccny](#) [My Account](#) | [Sign Out](#)

Users Spaces

Username

Account Home Reporting

[wwwccny](#) > [wpsadmin](#) > [Basic Plan 750DB](#) > [FTP Accounts](#)

Basic Plan 750DB

Hosting Space Menu

- Domains
- Web Sites
- IP Addresses
- FTP Accounts
- Databases
- File Manager
- phpMyAdmin

FTP Accounts

Create FTP Account

Item Name

Name

[wpsadmin](#)

1

FTP Accounts: 1 of 7

Powered by [WebsitePanel](#). Copyright © 2011 Outercurve Foundation.

[http://webpanel.ccny.cuny.edu/Default.aspx?pid=SpaceFtpAccounts&SpaceID=72](#)

1:00 PM

FTP Accounts

FTP accounts can have access set to specific levels of your website.

Use 'Create FTP Account' tab to make a new 'standard' FTP account.

http://webpanel.cuny.edu/Default.aspx?pid=SpaceFtpAc WebsitePanel - wpsadmin - ...

File Edit View Favorites Tools Help

Convert Select

The City College of New Y... Digital Exhibits » Page ... Comments for Archival... Suggested Sites Get more Add-ons

Welcome **wwwccny** My Account Sign Out

WebsitePanel

Users Spaces

Username

Account Home Reporting

wwwccny wpsadmin Basic Plan 750DB FTP Accounts

Basic Plan 750DB

FTP Account Properties

User name: **wpsadmin**

Password:

Confirm password:

Home folder: \

Access Rights: ☒ Read ☒ Write

Save Cancel Delete

Powered by WebsitePanel. Copyright © 2011 Outercurve Foundation.

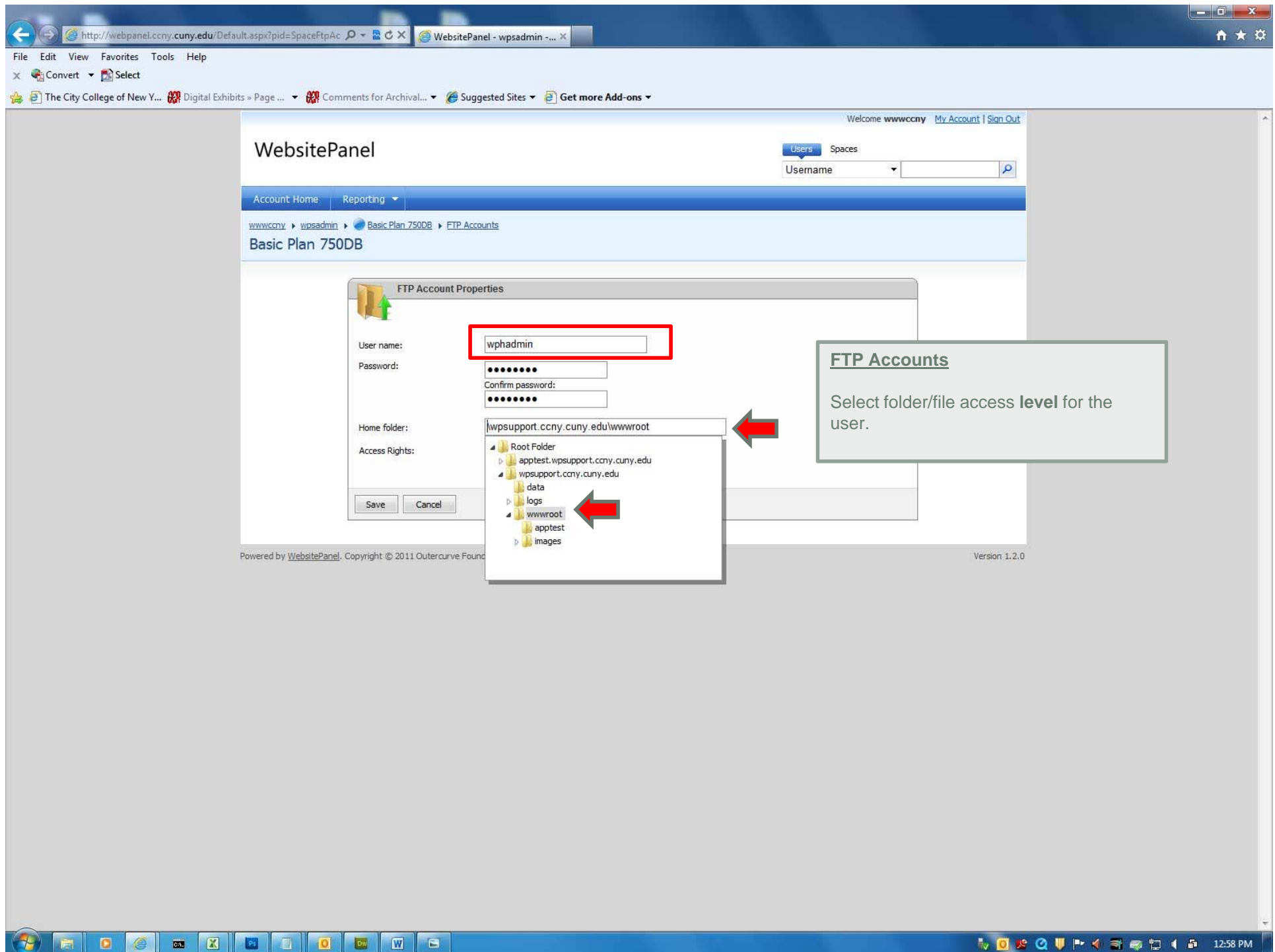
FTP Accounts

FTP accounts can have access set to specific levels of your website.

Use 'Create FTP Account' tab to make a new 'standard' FTP account.

Remember: Password specifications:
Must be 8 characters only
1 special character (i.e.: !@#%&*)
1 number
1 or more upper case letters

(NOTE: you will get a prompt if the PW is not correctly configured)



http://webpanel.cuny.cuny.edu/Default.aspx?pid=SpaceFtpAc WebsitePanel - wpsadmin - ...

File Edit View Favorites Tools Help

Convert Select

The City College of New Y... Digital Exhibits » Page ... Comments for Archival... Suggested Sites Get more Add-ons

Welcome wwwccny My Account Sign Out

WebsitePanel

Users Spaces

Username

Account Home Reporting

wwwccny wpsadmin Basic Plan 750DB FTP Accounts

Basic Plan 750DB

FTP Account Properties

User name: wphadmin

Password:

Confirm password:

Home folder: |wpsupport.cuny.cuny.edu/wwwroot|

Access Rights: ☒ Read ☒ Write

Save Cancel

FTP Accounts

Select folder/file access **level** for the user.

Powered by WebsitePanel. Copyright © 2011 Outercurve Foundation. Version 1.2.0

12:58 PM